

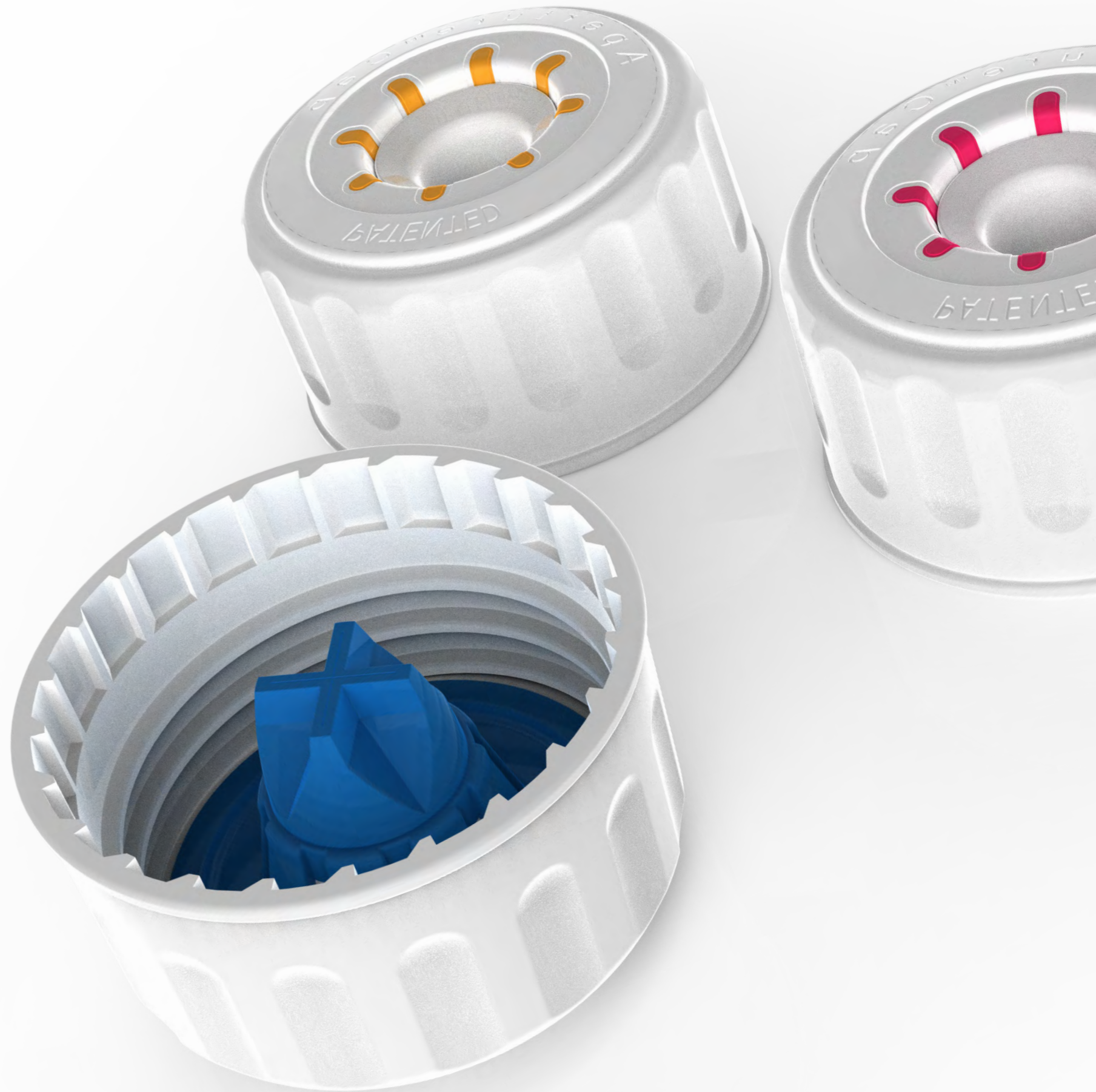


Patent No. GB251380



Aperture[®] is an irremovable bottle closure, essential for the safe and controlled use of liquid concentrates.

- ✓ Safe
- ✓ Simple
- ✓ Secure



Safe & Controlled

The majority of controlled dispensing mechanisms fail to provide a closed link between the open container and the dispensing device.

Aperture® Irremovable Closure solves this problem.

Eliminates:

- ⊘ Misuse
- ⊘ Waste
- ⊘ Theft

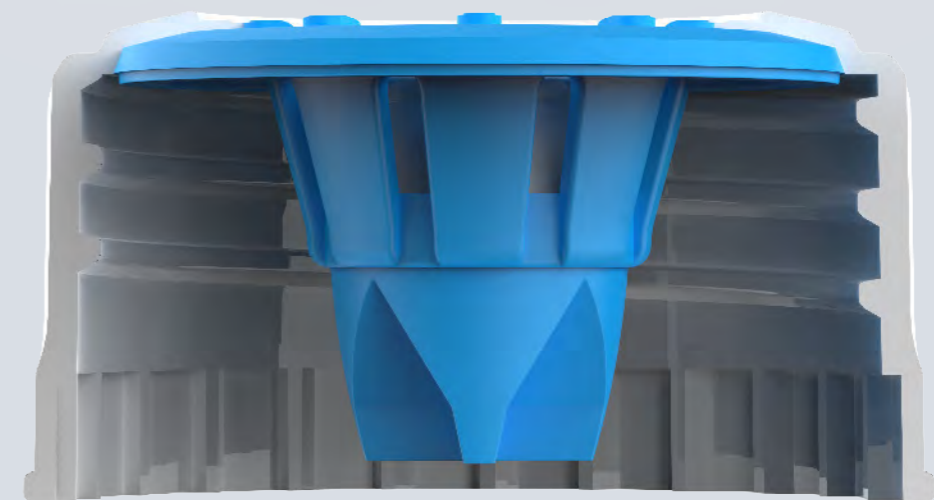


How it works

A syphon tube from a selected liquid dispensing device is inserted through the one way valve of the cap to extract the liquid contents from within the container.

1 Tube Entry Point

2 One-Way Valve



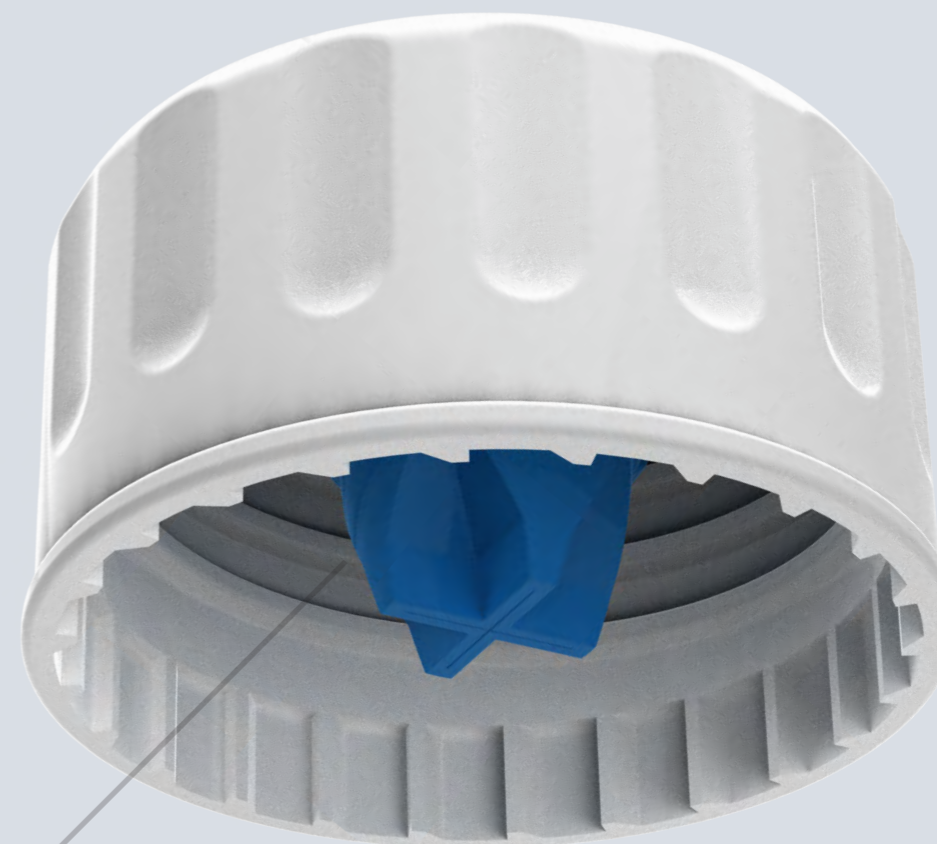
How it works

Once attached, the closure becomes irremovably connected with it's corresponding container and cannot be re-opened detached or removed.

3 Pre-Use Storage Seal

4 Industry Standard Thread

5 Ratcheting Teeth



Everyday Open Containers

Everyday dispensing containers fail to provide a closed system arrangement to safeguard against consumption and cost, as well as unrestricted methods of use.



Closing the Loop

Aperture® Irremovable Closure ensures a secure closed dispenser / container arrangement, only permitting the insertion of the vacuum tube from any dispensing device through the one way valve of the cap.



Compatible

Fits with 38mm container neck corresponding 1L, 2L, 4L, 5L, 10L, 20L bottle containers without the need to change production filling process.

Versatile

Will adapt with any plumbed / non plumbed / peristaltic controlled dispensing devices / pumps operated with a vacuum syphon tube mechanism.

Manual / Automatic / Peristaltic



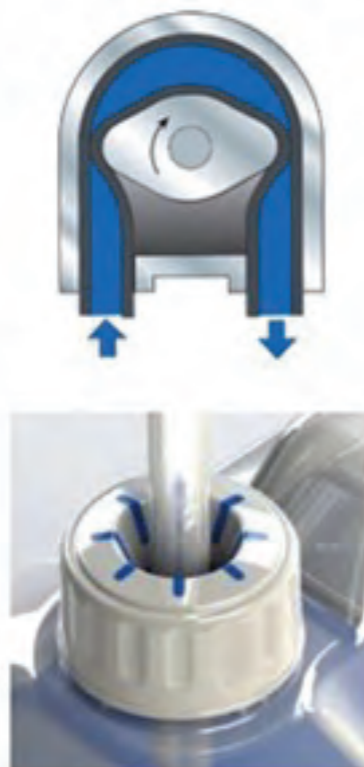
Jerry Can Dispensing

Jerry Can Dispensing Containers incorporating the **38mm Aperture® Irremovable Cap** provides a simple, safe and secure solution to the dispensing of chemicals.

Problem:

Manufactured Jerry Can Containers are designed to pour their liquid contents from within and are not suitably designed for controlled dispensing devices, allowing for unrestricted dispensing methods.

The **Aperture® Irremovable Closure** container combination solves this problem.



Used with a peristaltic pump, or dosing device,



Containers

10L / 20 L Litre Jerry Cans features a robust carry handle with four location features allowing units to stack securely.



User Safety

The Aperture® Irremovable Closure ensures safe handling and use of liquids in the workplace environment.

- ⊘ Exposure
- ⊘ Spillage
- ⊘ Misuse

Colour Coded

Multiple colour coded options are available for effective identification, ensuring the safe use of liquids.





✓
Simply Secure